

Human HLA-A*02:01&B2M&MAGE-A4 (GVYDGREHTV) Monomer Protein



Cat. No. MHC-HM401

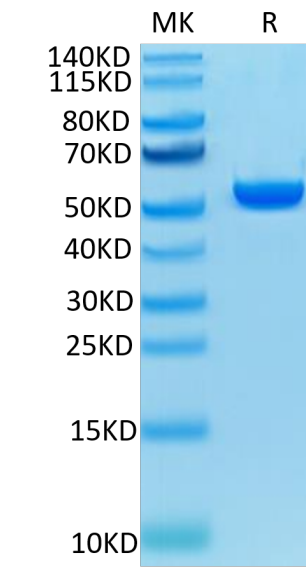
Description	
Source	Recombinant Human HLA-A*02:01&B2M&MAGE-A4 (GVYDGREHTV) Monomer Protein is expressed from HEK293 with His tag and Avi tag at the C-Terminus. It contains Gly25-Thr305(HLA-A*02:01), Ile21-Met119(B2M) and GVYDGREHTV peptide.
Accession	A0A140T913(HLA-A*02:01)&P61769(B2M)&GVYDGREHTV
Molecular Weight	The protein has a predicted MW of 50.5 kDa. Due to glycosylation,the protein migrates to 52-60 kDa based on Bis-Tris PAGE result.
Endotoxin	Less than 1 EU per µg by the LAL method.
Purity	> 95% as determined by Bis-Tris PAGE > 95% as determined by HPLC

Formulation and Storage	
Formulation	Lyophilized from 0.22µm filtered solution in PBS (pH 7.4). Normally 8% trehalose is added as protectant before lyophilization.
Reconstitution	Dissolve the lyophilized protein in distilled water. Please refer to the Certificate of Analysis for detailed instructions.
Storage	-20 to -80°C for 24 months as supplied from date of receipt.-80°C for 3 months after reconstitution.Recommend to aliquot the protein into smaller quantities for optimal storage. Please minimize freeze-thaw cycles.

Background	
Melanoma-associated antigen 4 is a protein that in humans is encoded by the MAGEA4 gene.The MAGE- A4 antigen is among the most commonly expressed cancer testis antigens. The Human HLA-A*0201 MAGE-A4 (GVYDGREHTV) complex Protein is a complex of HLA-A*0201 of the MHC Class I, B2M and GVYDGREHTV peptide of the MAGE-A4.	

Assay Data

Bis-Tris PAGE



Human HLA-A*02:01&B2M&MAGE-A4 (GVYDGREHTV) Monomer on Bis-Tris PAGE under reduced condition. The purity is greater than 95%.

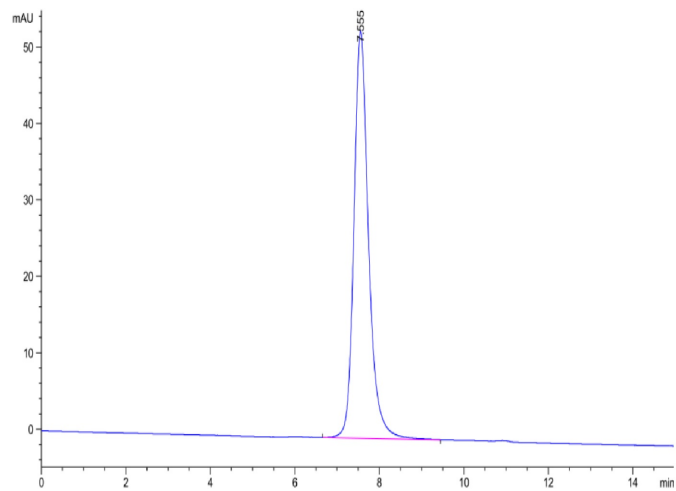
SEC-HPLC

Human HLA-A*02:01&B2M&MAGE-A4 (GVYDGREHTV) Monomer Protein



Cat. No. MHC-HM401

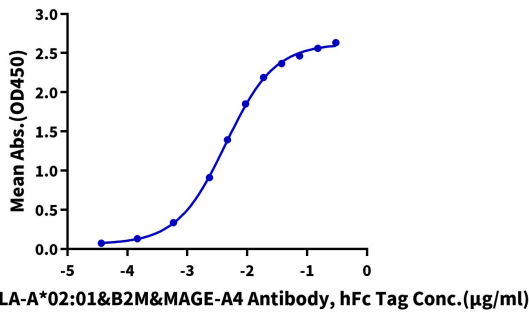
Assay Data



The purity of Human HLA-A*02:01&B2M&MAGE-A4 (GVYDGREHTV) Monomer is greater than 95% as determined by SEC-HPLC.

ELISA Data

Human HLA-A*02:01&B2M&MAGE-A4 (GVYDGREHTV) Monomer, His Tag ELISA
0.1µg Human HLA-A*02:01&B2M&MAGE-A4 (GVYDGREHTV) Monomer, His Tag Per Well



Immobilized Human HLA-A*02:01&B2M&MAGE-A4 (GVYDGREHTV) Monomer , His Tag at 1µg/ml (100µl/Well) on the plate. Dose response curve for Anti-HLA-A*02:01&B2M&MAGE-A4 (GVYDGREHTV) Antibody, hFc Tag with the EC50 of 4.4ng/ml determined by ELISA.